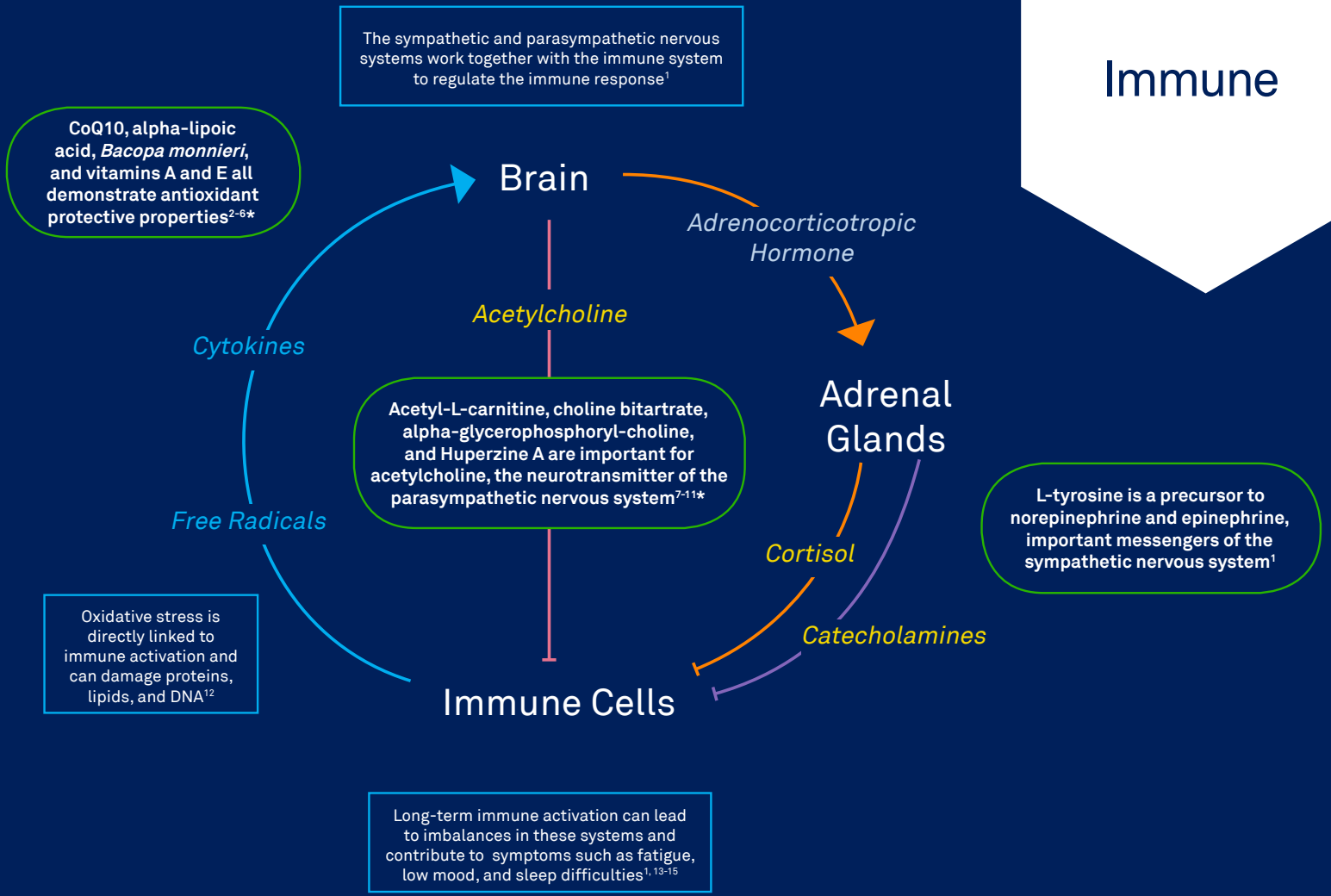


# Building Connections: Science to Symptoms

## NeuroImmune Response



Yellow = Biomarker

Light blue = Hormone

Blue = Immune System

Pink = Parasympathetic

Orange = Hypothalamic-Pituitary-Adrenal (HPA) axis

Purple = Sympathetic

### References

1. Pongratz G and Straub R. Arthritis Res Ther. 2014;16:504.
2. Tun M and Herzon S. J Exp Pharmacol. 2012;4:113-23.
3. Sanchez A, et al. Int J Mol Sci. 2015;16(8):16981-7004.
4. Louati K and Berenbaum F. Arthritis Res Ther. 2015;17:254.
5. Berk M, et al. BMC Med. 2013;11:200.
6. Hurtado-Alvarado G, et al. J Immunol Res. 2016;2016:4576012.
7. Mathur P, et al. Clin Cardiol. 2015;38(9):570-6.
8. White H and Scates P. Neurochem Res. 1990;15(6):597-601.
9. Wallace J, et al. Br J Nutr. 2012;108(7):1264-71.
10. Ueland P. J Inherit Metab Dis. 2011;34(1):3-15.
11. Abbiati G, et al. Eur J Drug Metab Pharmacokinet. 1993;18(2):173-80.
12. Kasperczyk S, et al. Toxicol Appl Pharmacol. 2014;280(1):36-41.
13. Spindler M, et al. Neuropsychiatr Disease Treatment. 2009;5:597-610.
14. Rochette L, et al. Can J Physiol Pharmacol. 2015;93(12):1021-7.
15. Liu X, et al. Restor Neurol Neurosci. 2013;31(2):109-23.



NeuroScience™

\*These statements have not been evaluated by the Food and Drug Administration. This product is not intended to diagnose, treat, cure or prevent any disease.